

MATRIX UV SERIES

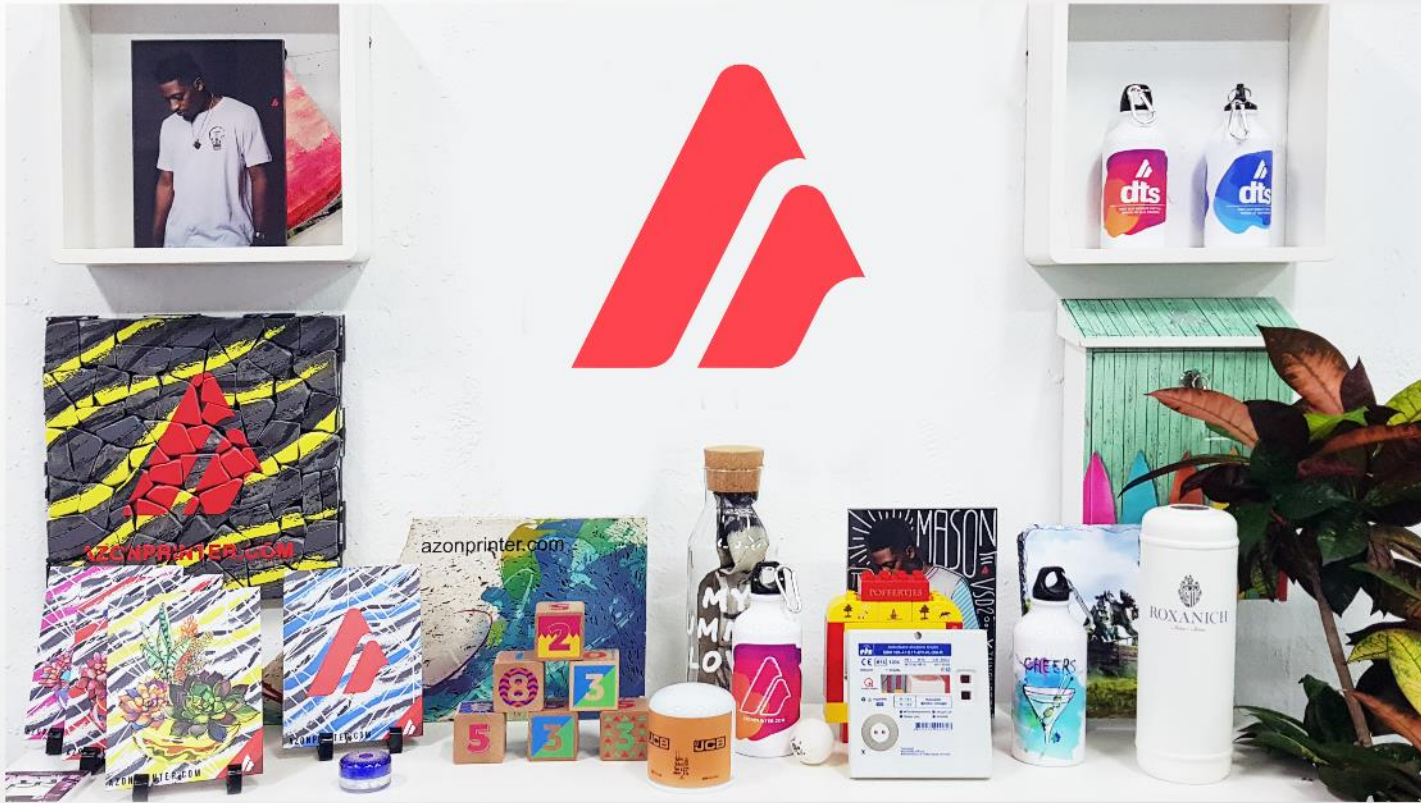


MATRIX UV



azonprinter.com

WIDE RANGE OF APPLICATIONS



With Matrix UV printers you can cover wide range of applications , Matrix UV can be used in low to high volume productions like printing on lighters, pens, personalized items, low quantity products branding, while still if need arise being able to carry out the tasks of large industrial printer with higher quality results.

Matrix UV printers have large spectrum of compatible materials which adds to application range materials like wood, plastic, ceramic, glass, metal and many others can be printed with few simple steps.

RIGHT SIZE FOR YOUR BUSINESS

Due to Matrix UV wide range of applications you can choose between 4 standard table sizes. Additionally to our customer satisfaction your printer can be customized in width and height according to your needs.

	MATRIX UV 1206	MATRIX UV 1806	MATRIX UV 1211	MATRIX UV 2511
PRINT AREA	590 x 1200 mm	590 x 1800 mm	1100 x 1200 mm	1100 x 2500 mm
HEAD CLEARANCE	0,5 - 420 mm			
OBJECT WEIGHT	50 kg/m2 (10.2 lb./ft2), non-concentrated load			

azonprinter.com

Matrix UV INK

Azon TurboJet

All Matrix UV printers are fueled with Azon TurboJet Ink. UV TurboJet inks are specially developed to ensure vivid colors and maximum fastness on almost any material. In case of materials with extremely smooth surface texture, primer is available to make sure that each Matrix UV user can achieve outstanding and satisfying print results.



EN 71-3 Approved

To increase Matrix UV range of applications TurboJet inks fulfill even the toughest EU regulations and norms. TurboJet is **phthalate free** ink.



Vivid Colors

Due to specially designed formula TueboJet inks provide vivid color on almost any material. Graphic printed with TurboJet will not fade over time .



Increased Adhesion

No drying time needed, once printed your product is ready for further processing.



CONTI System

Each Matrix UV is equipped with CONTI ink system [continues ink supply]. CONTI allows for printer to be refilled with ink during the printing operation which translates to zero time loss during the refill. Matrix UV printers use 6 bulks with capacity of 500 ml each. [White bulks are equipped with on demand ink agitation]



MATRIX UV SERIES INK SYSTEM CONFIGURATION

6x 500ml bulks CMYK + Varnish + White

6x 500ml bulks CMYK + 2x White

[custom configurations are available]

azonprinter.com

RIP SOFTWARE

AZON RIP

With Azon RIP software you are getting absolute control over your Matrix UV printer. Even the most complicated and creative ideas are just few clicks away from being printed.

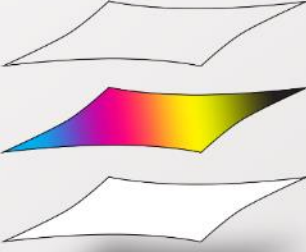
FROM A SIMPLE TILE TO MOSAIC ART

With individual control of each channel you can define up to 5 layers to create stunning effects on material like a simple tile.

Varnish Ink Layer
shiny finish on top

Color Ink Layer
super realistic colors

White Ink Layer
creating emboss effect



With ink cost calculator you will have precise data about ink cost for each graphic even before print. Advanced profiling allows for optimum ink consumption while delivering perfect results.

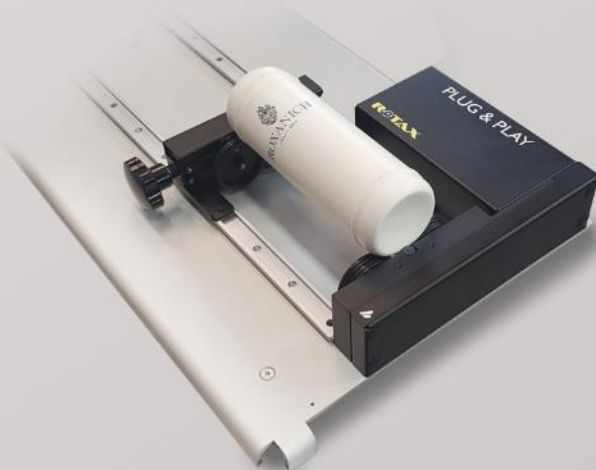


ADA BRAILLE PRINT

Predefined settings for printing by ADA Braille standard. [settings can be adjusted according to requested ADA BRAILLE grade]

NOZZLE PER CHANNEL

While printing on rotary add on you can regulate number of nozzles used per channel. Nozzles regulation allows for printing on round objects with perfect print results every time .

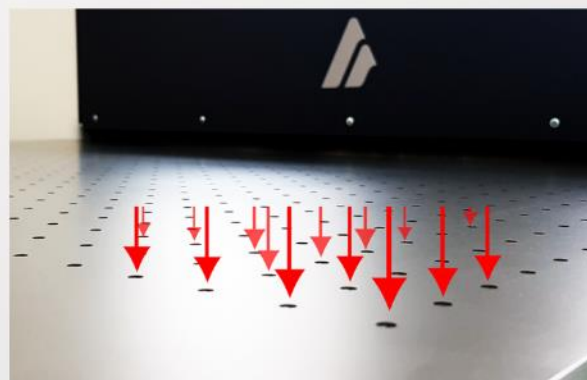


azonprinter.com

FEATURES

SELECTIVE VACUUM

All printers within Matrix UV series are equipped with vacuum tables. Vacuum tables are separated into zones which can be easily turned on and off depending on size of the material.



LOOP MODE

Feature which will enable you to make precision calculation how much time you need to create certain amount of required products. Simply send amount of copy's you need form RIP software to and turn on loop mode. When printer is finished with the first substrate it will move gantry to second one. While second substrate is printed you can safely remove first one and replace it with blank one. When the second substrate is done gantry will go back first one. This will continue until all copy's you send form RIP are printed.



ROTARY ATTACHMENT

A plug and play add on for every Matrix UV printer. Rotary attachment together with Azon RIP software will make your application spectrum even wider.



SPECIFICATIONS

MATRIX UV1206 / 1806 / 1211 / 2511				
SUBSTRATE				
PRINT AREA	590 mm x 1200 mm 23.22" x 47.24"	590 mm x 1800 mm 23.22" x 70.86"	1100 mm x 1200 mm 43.30" x 47.24"	1100 mm x 2500 mm 43.30" x 98.42"
APPCETABLE MEDIA	700 mm x 1900 mm 27.55" x 74.80"	700 mm x 2500 mm 27.55" x 98.42"	1200 mm x 1900 mm 47.24" x 74.80"	1200 mm x 3200 mm 47.24" x 125.98"
CLEARANCE	0.5-420 mm / 0.01"-16.53"			
MAX WEIGHT	50 kg/m2 (110.2 lb./ft2), non-concentrated load			
FIXTURE [VACUUM]	3 ZONES TABLE , 1 pump / 6 ZONES TABLE , 2 pumps			
MATERIAL TYPE	WOOD STONE PLASTIC PET, PE, PVC, PP, PS, PLA PC, PMMA, POM, PA, ABS GLASS CERAMIC METAL			
PRINT				
PRINT TECHNOLOGY	Ink-jet[On-demand piezo]			
DROP SIZE	3.5 - 21 picolitre			
PRINT RESOLUTION	360 dpi 720 dpi 1080 dpi 1440 dpi 2880 dpi			
SPEED	3.20 SqM/Hr 34.44SqFuHr / 3.66 SqM/Hr 39.39SqFuHr			
ABSOLUTE ACCURACY	+/- 0.01 (0.3 mm) or +/- 3% from specified print distance			
REPEATABILITY	+/- 0.008 (0.2 mm) or +/- 1% from specified print			
INK CONSUMPTION	CMYK 9.68 ml/SqM White 2.42 ml/SqM			
INK				
TYPE	AZON UV TurboJet, certified EN 71-3, Phthalate free			
CURING	ADJUSTABLE UV LED			
COLORS	CMYK / WHITE / VARNISH			
PRIMER	AZON UV CERTIFIED PRIMER			
SUPPLY SYSTEM	500ml INK TANKS			
INK CIRCULATION SYSTEM	White ink circulation using Azon Circulation Technology [ACT]			
SOFTWARE				
RIP	AZON RIP 64 bit with ADA Braille translator			
OPERATIONAL ENVIRONMENT				
TEMPERATURE	+15°C to 30°C / 59F-86F			
HUMIDITY	35-65% RH (non-condensing)			
POWER 220V/110V				
STANDBY CONSUMPTION	95 W			
MAX CONSUMPTION	2,6 kW / 5 kW			
ASSEMBLED DIMENSIONS				
(WxDxH)	1330 mm x 2300 mm x 1150 mm 52.36" x 90.55" x 45.27" 250 kg / 551 lbs	1330 mm x 2900 mm x 1150 mm 52.36" x 114.17" x 45.27" 390 kg / 661 lbs	1850 mm x 2300 mm x 1150 mm 72.83" x 90.55" x 45.27" 270 kg / 705 lbs	1850 mm x 3600 mm x 1150 mm 72.83" x 141.73" x 45.27" 630 kg / 992 lbs
WEIGHT				



azonprinter.com